



Fibrofor[®] HIGH GRADE
Fibrofor[®] DIAMOND

The cost-effective alternative to
steel reinforcement in floors and
outside areas.

The right fiber for every floor and every outside area

Decades of experience for your perfect floors or outside areas.

Over many years millions of square meters of floors have been reinforced with the synthetic high performance fibers of Brugg Contec, whether **productionhalls or warehouses, airports, railway foundations, parking decks, roads, roundabouts and so on.**

Depending on the requirements two types of fibers are used. For low to medium loads **Fibrofor High Grade** is recommended, a fibrillated fiber tailor made for such applications, which in addition to its ability to replace steel also positively influences the shrinkage behavior of concrete. For high loads **Fibrofor Diamond** is used, a **high performance monofiber** which distributes itself excellently in the concrete. Like the High Grade it can be embedded easily in the surface.

Typical applications

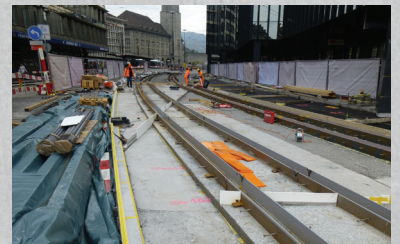
- Productionhalls and warehouses
- Shopping malls
- Car parks and parking facilities
- Any kind of outside areas
- Roads, roundabouts etc.
- Agricultural buildings
- and any more



Industrial floor (production hall)



Transport road



Railway foundation



Outside area



Roundabout



Car park



Agricultural building

A **project-specific static calculation** based on latest standards (EUROCODE) is the basis for the application of Fibrofor-Fibers. The conventional steel reinforcement can often be replaced completely or at least reduced dramatically resulting in **substantial cost savings**. If required steel and fibers can also be combined.

CE Certified according
EN 14889-2

In Europe only products tested according to
EN 14889-2 are approved.

Highest performance at low cost

Significantly lower reinforcement costs

The total or partial **elimination** of the conventional **steel reinforcement** reduces the reinforcement costs drastically. Also the labour- and cost-intensive **installation** of steel can be eliminated. In addition the opportunity to work **jointless** reduces the cost for cutting.



Industrial hall 50000 m² reinforced only with Fibrofor High Grade, jointless

Easy handling

The fibers can be **easily mixed** into the concrete and they distribute evenly. The ready-mixed concrete lorry can unload the concrete right where it is needed because the steel reinforcement is not required (**no pumps needed**). Any kind of surface finishing is possible because the fibers can be embedded very well in the surface.



Sales area

Durable and maintenance-free

Polyolefin fibers are **resistant to salt water** (outside areas, roads etc.) and **aggressive liquids** (e.g. excrements in agricultural buildings). In addition the **maintenance costs** of jointless floors will be minimized thanks to the reduction of the number of cutted joints.



Cattle shed (excrement resistant and no risk of injury for the animals)

Your benefits.

01/2016



- › **Cost reduction** by eliminating or reducing the steel reinforcement
- › **Installation time** of steel can be eliminated or reduced massively
- › **No costs for pumps** since the concrete lorry can unload the concrete where it is needed
- › **Any kind of surface finishing possible** (no sticking out fibers)
- › **Easy handling** thanks to the low weight
- › Clearly **improved shrinkage behaviour**
- › **Jointless** area possible (up to 1'000 m²)
- › **Low maintenance costs** (resistant to salt and aggressive fluids)
- › **Structural calculation** in accordance with Eurocode

Brugg Contec AG
Gübsenstrasse 80
CH-9015 St. Gallen
T +41 71 466 12 12
F +41 71 466 12 10
info@bruggcontec.com
www.bruggcontec.com

BRUGG **CONTEC**
Strong fibers.